

360 GYAN

360Gyan

Pioneering TLMS - Mapping Student Learning Progression Precisely



Deep Learning



Conceptual Constructivism



Personalized Learning



Progressive Outcomes



Taxonomy Alignment



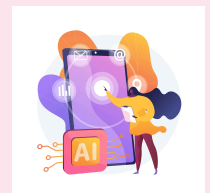
Board Independent



Peer Group Benchmarking



AI Enabled



Our Vision

To revolutionize global education by implementing a holistic, integrated, and scalable TLMS that meets the demands of 21st-century learning.

Current Education System Challenges

Rote Learning Dominance

Issue: The prevailing education system heavily leans towards ROTE learning, hindering ability to build concepts to knowledge

Impact: Limited critical thinking skills, lack of practical application, and reduced creativity among students

Neglect of Taxonomy

Issue: Neglect of Blooms / other Taxonomy, lead to a lack of structured progression from lower to higher-order thinking in lesson planning resulting in poor deep learning

Impact: Inconsistent cognitive skill development, inadequate preparation for real-world challenges, and limited depth of knowledge

Inefficient Digital Content & Assessment

Issue : Most available Digital Contents fail to complement the local teacher's nativity or experience, and only enhance the visual appeal and technology overuse.

Impact: Poor teacher supplementation and inefficient participation. Absence of concept level assessments leading to ineffective remedial.

Inadequate - One size fits All Learning

Issue: Students differ in Learning Type (VARK), Learning Style (Cognitive Participation), Learning Level (Easy, Medium, Difficult levels - Subject or Activity), Learning Pace (Time and Attempts taken to understand the content).

Impact: Some students learn well and some don't. This leads to remedial classes (with similar results). This also impacts the school overall performance.

360Gyan TLMS

Deep Learning

Overview: 360Gyan enables tracking of concept to lesson level learning aligned with type, pace, style, level and more parameters

Features: Comprehensive evaluation aligned with Blooms / other Taxonomy to guide structured lesson delivery and learning.

Intelligent Automation

Overview: Built with powerful AI Engine that streamlines the Teacher's and Learner's progression, providing an intelligent, scalable, and efficient solution with appropriate remedial.

Features: Automation of Taxonomy procedures, Ready-to-use Library of Learning Outcomes and aligned Question Bank. Encourages diverse assessment methods, including peer and self-assessment.

Collaborative Ecosystem for Teachers

Overview: Upload your own content or content from other Publishers / SMEs for effective knowledge sharing.

Features: Students learn best from teachers who can connect with them. Teachers can upload their own videos. Find something interesting on Youtube / Vimeo, you can use it in your lesson plan and share with others.

Product Features

360Gyan has features that strongly enable the 4Cs - Critical Thinking, Communication, Collaboration and Creative Thinking, for a student to progress in career as well as in life.



Critical Lesson Conceptions

Helps teachers to structure lesson plans, lessons, chapters to concepts suitable for their respective classroom audience



Explicit Teaching Taxonomy

Helps teachers to set learning outcomes for both Lower and Higher order thinking



Teacher Led LMS

Helps teacher include content such as videos, pdf, documents, etc.



Activity Based Learning

Teacher can include their own activities such as Jigsaw, Tic Toe, Think Pair Share, etc., or choose from a list of grade appropriate activities.



Peer Group Benchmarking

See how your performance is with respect to other students in your section and your grade, subject-wise.



Peer Group Collaboration

Enable students to enjoy the learning process by Collaborative Learning



Academic Planning

Calendar integrated with time table and time table mapped with lesson plans.



Comprehensive Assessment

Includes Self, Peer and Teacher assessments with Score cards and Rubric Systems



AI Enabled Adaptive TL

An Adaptive AI Engine that assists the Teacher to provide remedial in real time and helps Students to identify the gaps in their learning.



How it helps different stakeholders?



Schools

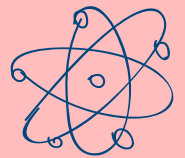
- 👉 Structure Lessons into Lesson Elements (All/ Critical Lessons)
- 👉 Assign Learning Outcomes (LOTs & HOTs) to Lesson Elements
- 👉 Assign Lesson Contents (files) for Use by Teacher
- 👉 Add Activities for multiple concepts to be taught in the classroom
- 👉 Create / View Differentiated Instructions & Activities of Teachers
- 👉 Compare Section performance to Grade
- 👉 Generate Various Reports



Students



- 👉 View Learning Progress of Self
- 👉 Practice through Tests
- 👉 Do Self & Peer Assessments
- 👉 Receive Assignments / Worksheets and Submit
- 👉 Track Learning Pace, Difficulty, Type of Self
- 👉 View Various Progress Reports
- 👉 Generate / build a Profile progressively
- 👉 (Parents too can view all the above)



Teachers

- 👉 Assign Lessons and / Or Lesson Elements to Periods
- 👉 Assign Learning Outcomes (LOTs & HOTs) to Lesson Elements
- 👉 Plan & Prepare for Lessons Delivery (Class Room / Online)
- 👉 Present Lesson with Digital Contents (Own / External)
- 👉 Set the 'Must – Should – Could' s of Class
- 👉 Set Lesson Learning with Activities, Peer Grouping etc.,
- 👉 Use / Set Differentiated Instructions (Jig-Saw, Tic Toe, Think Pair Share etc.,)
- 👉 Update Lessons / Portions Completed
- 👉 Distribute Assignments / Worksheets
- 👉 Generate QP (Pen & Paper / Online) from Question Bank (Own / Other)
- 👉 Assess at all stages of Learning progressively (LOTs & HOTs Linked)
- 👉 Track each Student's Learning Pace, Difficulty, Type and Progress
- 👉 Generate Various Reports